



Newsletter Editor: Joan O'Byrne  
joan.obyrne@me.com>

Masthead art (detail) by [Joan O'Byrne](#)

[www.seattlecoarts.com](http://www.seattlecoarts.com)

### 2020-2021 Calendar

- Nov** 1 POM Deadline  
2 Board Meeting  
8 Newsletter Deadline  
24 General Meeting via Zoom  
Program: Larine Chung
- Dec** 1 POM Deadline  
7 Board Meeting  
8 Newsletter Deadline  
15 General Meeting via Zoom  
Program: Scott Landry
- Jan** 1 POM Deadline  
4 Board Meeting  
8 Newsletter Deadline  
26 General Meeting via Zoom  
Program: [Sandra Kahler](#)
- Feb** 1 POM Deadline  
1 Juried Show open for submissions  
1 Board Meeting  
8 Newsletter Deadline  
23 General Meeting via Zoom  
Program: Vikram Madan
- Mar** 1 POM Deadline  
12 Deadline for Juried Show  
1 Board Meeting  
8 Newsletter Deadline  
23 General Meeting - LIVE  
Program: Janis Graves

*Continued on page 2*

Meeting Location  
**THE COMFORT OF YOUR OWN COUCH,  
ON ZOOM**  
11:30 Greeting Time. 11:45 Short Meeting  
12:30 Presentation

November 24th 2020  
PROGRAM

By  
**Larine  
Chung**



Here is what Larine  
Chung has to say  
about her art.

“I work primarily in oil and dry media, based mostly on direct observation, interlacing with imagination. My works have a centralized theme around growth and reflection. Due to my mixed cultural backgrounds, my works also exhibit Eastern viewpoints through the depiction of Western motifs, an underlying current of duality trying to merge into oneness.

*Continued on page 2*

Continued from page 1

**Apr** 1 POM Deadline  
5 Board Meeting  
8 Newsletter Deadline  
27 General Meeting - LIVE  
Program: Steven Reddy

**May** 1 POM Deadline  
3 Board Meeting  
8 Newsletter Deadline  
25 General Meeting - LIVE  
Program: Rhonda Dickson

**Jun** 1 POM Deadline  
1-30 Jurried Show  
17 Board Meeting  
8 Newsletter Deadline  
22 General Meeting - LIVE  
Program: Tom Hoffmann

Continued from page 1

I have been combining non-traditional art making methods with heightened observational sensitivity to create works with intensified emotional impacts for a while. Each painting begins with an abstract Chinese ink painting composition, and concrete realistic motif grows out of the abstract to reach oneness, promoting understanding towards each other.

Art is an outlet for my various obsessions in life. I often draw and paint what I am drawn to in my immediate surroundings. Different imagery in my mind interweave into a tapestry of visual storytelling.”

Larine is from Shanghai, China and was a concert pianist before coming to the US. She has many talents and we look forward to seeing her presentation on November 24

## PAINTING OF THE MONTH

Instructions for entries and voting.

**For December:** Entries will be accepted any time up till **Midnight Tuesday Dec. 1.**

The first 18 entries received will be featured in the December Newsletter due to be published Wednesday December 16.

Try to cover your signature before taking a photo of your work\*\*. Entries by jpeg should be at 72 ppi resolution and 1200 pixels on the longest side, with your jpeg file size no larger than 200kb. Please send as an email attachment to me : [joan.obyrne@me.com](mailto:joan.obyrne@me.com)

Voting takes place from **Wednesday, Dec 16, until midnight Sunday, Dec 20.**

Vote for your three favorite entries, and email them to Lanie Franza : [LanieFranza@icloud.com](mailto:LanieFranza@icloud.com). Winners will be featured, as usual, in the January Newsletter. Because of several Newsletter deadlines, we ask that you follow these dates.

**GET YOUR ENTRIES AND VOTES IN ON TIME!!**

\*\*If you only have a jpeg of your work with the signature visible, send it anyway. I have a way to cover it digitally... though it takes extra time!! Joan, editor

# PRESIDENT'S MESSAGE

By *Wendy Johnson Shearer*



Are We Surviving The Year of The Pandemic?

“An empty lantern provides no light. Refuel to allow your light to shine brightly.” Unknown

“Talk to yourself like you would talk to someone you love.” Brene Brown

“Sometimes the most important thing in a whole day is the rest we take between two deep breaths.” Etty Hillesum

“I am fully aware that to leave grief and trauma unaddressed, unwelcome, and unhealed can quite literally kill you”  
Alicia Garza

Greeting to My Co-Arts Friends and Colleagues,

Have you “hit the wall” yet? I am finding that my *will to stay positive* has begun to run low. I choose to see this as an opportune time to learn from grief and trauma. Throughout my life, I have been pegged a “Pollyanna” and wearing “rose-colored glasses”. This year has been particularly challenging for those of us who like to smile and be happy. I don’t like to think about the concepts of self-doubt and rage. But this year has provided some major shifts in my outlook.

How do you replenish yourself in times like this? When I consider the 120,000 new COVID cases a day, the closeness of the presidential race, the infinite challenges we face as a nation divided, the homeless I pass on daily walks, I can’t avoid the lessons I need to learn. And then I add the longing I have for normalcy, which brings me to “Surviving in The Year of the Pandemic”. I’m learning about courage.

I imagine that we are mostly similar in the ways we cope. We know what to do for our own well-being physically, emotionally, spiritually, mentally, socially, financially, and spatially. It is when we lose reserves that we get worn down. And the gray days pile up. And that feeling of melancholy sets in.

I recommend an inspiring article by Alicia Garza in Elle Magazine: <https://www.elle.com/culture/a34507841/alicia-garza-the-purpose-of-power-excerpt/>. She suggests we take the time now to bring up some of the grief and trauma we have kept in the dark, since it is all around us.

Talking openly about our struggles provides space for profound freedom to navigate. We can drop our denial and not worry about feeling vulnerable. What is the first line of F. Scott Peck’s The Road Less Travelled? “Life is hard”. As Seattle Co-Arts members, we are fortunate to be a supportive community of artists. With our paintbrushes, we voice the range of mysteries we feel. We paint through the pain!

I wish you all well with your own courageous journey and look forward to seeing what you’re painting these days.

Keep painting and stay well,

Wendy

# OCTOBER DEMONSTRATION

## SUZE WOOLF

Submitted by *Jenny Kinberg*



'Grass Returns First'  
Watercolor

Suze Woolf is an artist of many talents. She is a Watercolorist loving to work "Plein Air" and drawing inspiration from the landscape especially when she travels. Suze says "I spend a great deal of my time outdoors. There is no better way to appreciate what nature does for us than to paint it, and I carry my paints almost everywhere."

But more than that she is creating new work showing her passion for the environment by using different and odd materials. These include paper, silk, wood, glass, brick, bark, and wool felt dyed with iron oxide .

Her anxiety about climate change emerges in her series on burned-over forests. Here she sees a strange beauty, but destruction and heartbreak too, and likes to capture the feeling she had walking through them, transferring that feeling to her art. She is fascinated by the patterns made by destructive beetles on the trees and decided to make a series of them as art, in the form of books. These she binds with wire edged binding, allowing the pages to lay flat, leading to better viewing. Some books she makes from digital prints and even originals of her paintings, allowing people who may not have much wall space or who are traveling to have an original piece of art.

She is a huge fan of art residencies as a way to grow. The opportunity to be influenced by other creative minds is so powerful. Collaboration with scientists, poets, paper artists, book binders and other disciplines also really helps.



Some of her work is currently on tour and has been in Florida, North Carolina, Kansas, Michigan, to name just a few places.

Suze Woolf "State of the Forest" exhibition Fabric Trees.  
February 1 - May 31, 2022

[The Bateman Foundation Gallery of Nature](#)

Victoria Harbour Steamship Terminal Building Victoria, BC. Canada



Check her work out on her Website:  
[suzewoolf-fineart.com](http://suzewoolf-fineart.com)

Suze currently has work at ERA Ida Culver show "Earth, Wind and Fire"



Continued from page 4

Below is a poem that represents  
Suze's latest works.

### Larva.

From a Latin word that meant  
ghost, specter,  
disembodied spirit.  
Demon.

The forests are haunted.

Press an ear to the bark  
you can hear scribbling.  
Beetle larvae grave the wood  
in their dark underworld,  
marking the tree for death.

In runic calligraphies,  
in cuneiforms, in hieroglyphs  
of hunger they write  
by excavation, by  
gnawing forward  
toward the next life,  
the life with wings.

The larval galleries are inked  
sometimes with blue-stain fungus.

What is being said?

*Fiat justitia, ruat caelum*

(Let justice be done  
though the heavens fall)?

*Fiat justitia, ne pereat mundus*

(Let justice be done  
that the world not perish)?

The dying trees flush red  
then blench to gray.  
High on the mountains  
where air is arid and cold  
they stand for decades,  
ruined, limbs rattling  
when the wind is up.

These are called "ghost forests."

Melinda Mueller

Examples of some of Suze's  
"Bug Books"



## MEMBER PROFILE



### ESTHER SARANTOPOULOS

Esther joined Seattle Co-Arts in 2020 and is currently President of Seattle League of Arts

We are happy to have her as a member of our organization

“In our teen years my three sisters and I were first introduced to painting by our Great Aunt Grace. She was a prolific porcelain and oil painter, mostly of florals and nature. At that time I only had the patience to complete one small painting of a sweet little cottage by a pond.



In 2016 I transitioned to working part-time and subsequently retired after 35 years of full-time work in my beloved career as an Occupational



Therapist. I was interested to find a creative pursuit to enhance my free time and remembered my start at painting. I joined the friendly and encouraging art group at Shoreline-Lake Forest Park Senior Center at the beginning of 2016 and have been enjoying discovering this form of expression ever since.

Taking watercolor courses has helped me gain confidence in drawing but for now I mostly enjoy doing acrylic abstract and representational works because of their free, fluid quality.

Art is such a thrilling form of self-discovery....loving what comes from within!”

Because of Covid and our inability to meet in person I have been profiling some of our newest members. Mainly those who joined us in 2019-2020.

Now I would like to open this up to all members regardless of when you joined I would try to feature two members per month.

What I would like from you is a short bio, just some general information about yourself, what year you joined SCA. [ So I don't have to look it up! ], a photo of yourself and two photos of your work. Just get it to me by the 8th of the Month and I will get it in the Newsletter. If I get too many, I will simply put them in the next Newsletter. **Joan**

# PAINTING OF THE MONTH

Vote for your favorite three, by letter and email your choices to Lanie Franza. [laniefranza@icloud.com](mailto:laniefranza@icloud.com) by Sunday November 22nd



**“It’s Good to be King”**

Acrylic-fixed Watercolor on Black Canvas



**“Bringing Home Dinner”**

Watercolor



**“Let Me think About That”**

Watercolor, Ink and Watercolor Ground,



**“Let Me Out!”**

Collage



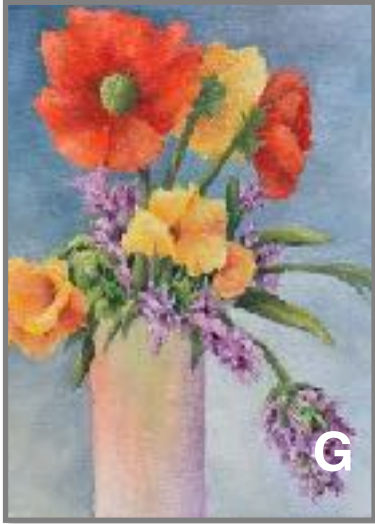
**“Cape Disappointment”**

Oil on Canvas



**“Fir Island”**

Acrylic



**“Colors of Summer”**

Oil on Canvas



**“Our Gift Certificate”**

Watercolor



**“Surfer Boy”**  
Marine Beach Edmonds.

Watercolor



**“Family Gathering”**

Acrylic



**“Henry”**

Acrylic on Canvas



**“Gems of the Garden”**

Oil on Illustration Board



Continued from page 8



**“Early Autumn”**

Soft Pastel



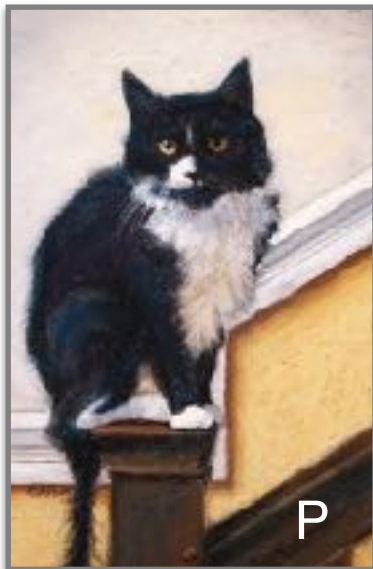
**“On the Way to Yosemite”**

Watercolor



**“Adoration”**

Colored Pencil



**“Chante”**

Pastel



**“What Lies Beneath”**

Encaustic, Mono Print  
and Shellac



**“Egret Stretch”**

Watercolor

**A LETTER FROM THE EDITOR:**

I am so excited to be working with **Lanie Franza** and bringing you Painting of the Month via the Newsletter. I think it will be a great way for us to share our artwork and grow from interacting with all the creative people in our organization.

Remember you do not have to be a juried member to enter POM or to vote. So it is a great way to show your artwork, and if you are hesitant, a great way to get used to being sort of in the spotlight! Also, unless you are a winner, your submissions are anonymous! There are 3 winners, First Place, Second Place and Third Place with monetary prizes!! Enough at least for a couple of tubes of paint, and maybe a latte!!

If any of you are in upcoming shows please let me know. Send me the information as well as a sample of your work in the show and I will do my best to get it in the Newsletter. Right now I think we all feel isolated, and this is another way we can keep in touch. **Joan**

# 2021 JURIED SHOW

## "Art to Lift our Hearts"

By Sherry Willis



### Art to Lift Our Hearts: Preview of 2021 Juried Show

Our 2021 Juried Show is titled **Art to Lift Our Hearts** for obvious reasons! It's a tough time and though it is not over yet, our paintings can lift our hearts and spirits as we navigate through it. Be thinking about what you've created – or want to create - this year that lifts *your* heart and plan to enter it in the Juried Show. We will all benefit!

Here is the outline; full details will be in the Prospectus available on the Website, [www.seattlecoarts.com](http://www.seattlecoarts.com) by our next General Meeting, November 24.

**Dates of Show:** June 1-June 30, 2021

**Location:** Red Sky Gallery, Lake Forest Park Center – Upper Back Level

**Commission:** 50%

**Submissions dates:** February 1 – March 12, 2021

**Notification of Acceptance:** April 1, 202

**Juror:** Tom Hoffman

**Opening Reception & Awards:** Saturday, June 5th

**Closing Reception:** Saturday June 26

Red Sky Gallery is open now, masks required of course. It is a large open space with lots of interesting art, some of it by our Co-Arts colleagues.

The Gallery shows handmade gift items too. Please go by to see this beautiful art space, and let Laura Michaelson, the owner, know you are with Co-Arts. Let's show her our support.

We are planning for an in-person show. If it needs to be virtual, that's a possibility.

Every year we have several sponsors who donate gift certificates and merchandise for recipients of Awards during our Show.

Please patronize these stores, and mention you are a member of Seattle Co-Arts!

**For a detailed list see page 17**

# NON-JURIED EXHIBITS.....

Several years ago, Seattle Co-Arts had the luxury of using the NW Hospital Cafeteria wall space and those of the Seattle Breast Office for displaying our great and varied artwork. It was “first come, first up”, and a hanging and planning group hung the work. The work was shown for approximately three months. There was no jury to say yea or nay. It was up to the artists to decide which of their work was to be shown, hence “Non-Juried Show”. It was a great opportunity. We received many good comments and often sold some of the work.

When University of Washington took over hospital facilities, they transitioned to permanent installations, and our opportunity vanished. Until recently each artist has been responsible to find their own place to show their work. We still encourage each artist to find their own locations or go with a group to show, as well as participating in the Seattle Co-Arts Annual Juried Show.

Recently we have been actively looking for locations to show for several months at a time and use their wall space. To be on this “location list,” we hope for many viewers of the work, for secure locations reducing theft and damage, for opportunities for sales, for appropriate hanging space, and an agreement regarding hanging, either by us or by their workers.

Last fall we showed at the Evergreen Hospital East Wing corridor by their coffee stand, there were lots of passer-by and the display could be seen from outside of the Hospital. There were 40 works. The Hospital was responsible for hanging, but we were responsible for delivery. We had a lot of good feedback. There were to be two other locations...then the Pandemic happened and all was put on hold.

At this time, we have a Non-Juried Show planned for the months of April, May, June and July. We will be calling for 60 paintings, that is, six paintings from ten artists, or three paintings from 20 artists.

**Lynn Kerr** has started us off on the Non-Juried Shows, but has taken on other obligations, and would like to find another more mobile Chairperson. They will be shared the list and information already established. This is a perfect time to have a new person step in, as things are slow, stopped or closed. It is an enjoyable way to expose Co-Arts to new and exciting locations, and make new friends for the Seattle Co-Arts community. Please step up and take on this fun and exciting opportunity.

LIBRARY NEWS  
By Anna Choi Lee

OVERDUE BOOKS & DVDs

DVD: EVE INGRAHAM 1 #35  
BOOKS: JOAN O'BYRNE 1

Please arrange with Anna to return Books & DVDs  
Email. [artproject@comcast.net](mailto:artproject@comcast.net)

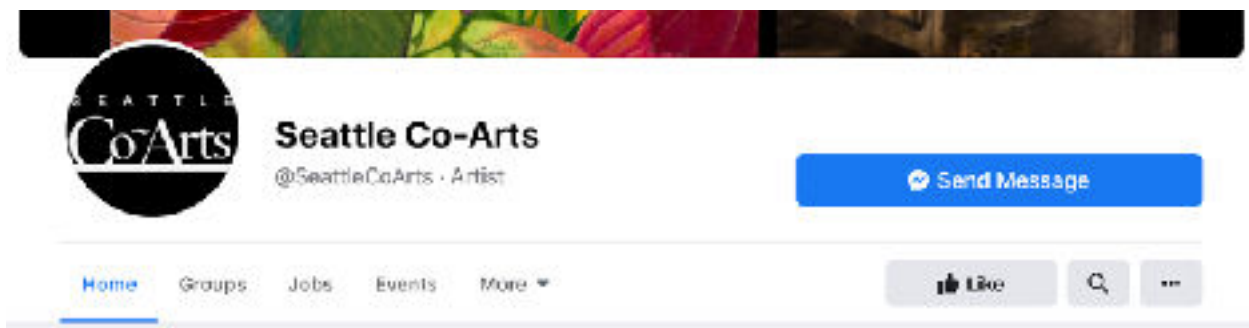
# SOCIAL MEDIA NEWS

Thanks to Anna Choi Lee and Wendy Thompson Shearer for expanding our presence on social media. Do you know that SCA has our own Facebook (FB) page where we post information about our organization? You can check it out by going to FB and inserting **Seattle Co-Arts** in the search box. Please join the page and invite other members to do the same. This is a public page and open to anyone interested in SCA. Do remember to “like” us and spread the word.

Have you ever wished there was a private space where you could talk directly with other SCA members about your work? There is a second FB page, titled **Seattle Co-Arts Group** that allows you to post thoughts, ideas and images of works either finished or in process. This page is available only to SCA members and is unavailable to anyone who has not been admitted. Contact Wendy, the group administrator for admittance to the group. You will find this a supportive community eager to see your work. *Janice Patterson*

## Seattle Co-Arts on Facebook

*By Anna Choi Lee*



<https://www.facebook.com/SeattleCoArts> This is our public page, which is accessible to the world (public) to show our presence.

Please like our page to support our organization by clicking [like] button



## Seattle Co-Arts Group

Private group · 26 members

This is the link to our **private group** on Facebook:

<https://www.facebook.com/groups/230182758271647/about>

This group, you have to be invited to be included since it's NOT visible to the public. Please invite your SCA friends by clicking [+INVITE] from the group site.

### Seattle Co-Arts Group

Private group · 26 members



Invite

**All conversations and sharing are private to the members only.**

## Seattle Co-Arts on Instagram

We don't have a separate account on Instagram, but if you tag any of your art work with **#seattlecoarts**, when anyone searches #seattlecoarts it will display all the articles or pictures associated with that hashtag (#).

Think of **hashtags** as a way to connect social media content to a specific topic, event, theme, or conversation. They also make it easier to discover posts around those specific topics, because **hashtags** aggregate all social media content with that same **hashtag**.

Limitations: **Hashtags** can only contain letters, numbers, and underscores (\_), no **special characters**

Any questions, please email Anna Choi Lee at [artproject@comcast.net](mailto:artproject@comcast.net)

Editor's note: It looks like we will all be using social media in one form or another to communicate for quite a while longer. Please help promote Seattle Co-Arts any time you have the opportunity... perhaps at a Zoom workshop, or other art related groups you belong to. Also invite friends to attend the General Meetings & Demos as guests, and hopefully get them to join us! *Joan*

# MEMBER NEWS.....

## WOMEN PAINTERS OF WASHINGTON SHOW

Wenatchee Valley Museum and Cultural Center  
127 South Mission Street  
Wenatchee, WA 98801

Awards given to two of our SCA members!

Sandra Kahler and Jonlee Nunn.

*See the winning works below.*

The Legacy Continues: Empowering Women

October 16, 2020 to February 6, 2021

Women Painters of Washington presents the event marking our 90th Anniversary and celebrates the 100th year of women gaining the right to vote. Concurrently with the Washington State Historical Society show celebrating women's suffrage, we will celebrate our vibrant, accomplished professional artist members who are so similar to our suffragette sisters. This art exhibit will be a striking tribute to our spirited beginnings and honor the strength of our legacy over time.

While no artist receptions are planned, online access to the exhibit will be on two websites:

WOMEN PAINTERS OF WASHINGTON [www.womenpainters.com](http://www.womenpainters.com)

WENATCHEE VALLEY MUSEUM. [www.wenatcheevalleymuseum.org](http://www.wenatcheevalleymuseum.org)



"Low Tide". Sandra Kahler



"Not for Sissies" Jonlee Nunn



Many of you know that ERA Living in Seattle and Issaquah often hosts the Seattle Co-Arts Juried Show and frequently invites our members to participate in their other shows,

Two of their upcoming shows will feature three of our members.

**Earth Wind and Fire** at ERA Ida Culver and **Sheltering in the Studio** at ERA University House.

Unfortunately because of COVID restrictions there will be no reception, and those of us who have attended these in the past have fond memories of the great food and drinks!! Below is some of the members' work.

Donna Lough and Joan O'Byrne are both at Earth Wind and Fire and Sheltering in the Studio  
And Anna Choi Lee joins them at Sheltering in the Studio



*"Water is Life". Donna Lough*  
Earth, Wind and Fire



*"Yearning to Breathe". Donna Lough*  
Sheltering in the Studio



*"A Terrible Beauty". Joan O'Byrne*  
Earth, Wind and Fire



*"Angst". Joan O'Byrne*  
Sheltering in the Studio



*"Desert Sanctuary " Anna Choi Lee*  
Sheltering in the Studio

# CALL FOR ENTRIES.....

Adapted from: <https://artist.callforentry.org/festivals.php>

## 2021 CVG Show

MORE INFO

**APPLY NOW**

**Call Type:** Competitions

**Eligibility:** Regional

**State:** Washington

**Fee:** \$45.00 (2021 CVG Show)

**Entry Deadline:** 11/29/20

**Event Dates:** 9/26/20 - 11/29/20

An all-media juried art competition with over \$9,000 in cash and purchase awards for Washington State artists to be held in the Collective Visions Gallery of Bremerton, Washington, January 23 to February 27, 2021. Entry \$45 for 2 artworks, entry deadline: November 29, 2020. There are separate categories for two-dimensional, three-dimensional, and photo/digital works of art with prizes in each category.

Adapted from: <https://seattleartistleague.com/2020/11/04/portrait-contest-2/>

## Seattle Artist League

### Portrait Contest

**Call Type:** Competition

**Eligibility:** International

**State:** Washington

**Fee:** \$35.00

**Entry Deadline:** 12/31/2020, midnight PST; open now for submissions.

The first annual Seattle Artist League Portrait Contest is aimed at encouraging artists to focus on and develop the theme of portraiture in their work. The competition is open to everyone aged sixteen and over, in recognition of the outstanding and innovative work in drawing, painting, printmaking, digital painting, and mixed media. A jury will determine the winners. A selection of the portrait submissions will be shown online.

Prizes

1<sup>st</sup> Prize: \$1,000 cash

2<sup>nd</sup> Prize: \$500 SAL Gift Certificate

3<sup>rd</sup> Prize: \$300 SAL Gift Certificate

Honorable Mentions: \$100 SAL Gift Certificate

*Continued on page 17*



Continued from page 16

## Submissions

Link for Submissions: [portraitcontest.artcall.org](http://portraitcontest.artcall.org)

Submission fee \$35. Members enter free!

Contact us for your code.

## Contact

Questions? Contact [portraitcontest@seattleartistleague.com](mailto:portraitcontest@seattleartistleague.com)

\*\*\*\*\*

## SPONSORS 2020

*Store hours or closures listed during COVID 19  
as of 10/2020*

Check stores directly for potential changes

### ALL OPEN STORES REQUIRE WEARING MASKS

**ADG Printing**, <[ADGprinting.com](http://ADGprinting.com)>

(Online ordering and pickup only)

**An Artful Touch** <[admin@artfultouch.com](mailto:admin@artfultouch.com)> (425) 823-2336

(Phone or email orders \_ pickup Mon-Sat 10-6, Sun 12-6)

**Artist & Craftsman Supply**, <[artistcraftsman.com](http://artistcraftsman.com)>

(Open Daily 10-6, 5 max in store)

**Daniel Smith** <[danielsmith.com](http://danielsmith.com)>

(Open Daily 10-6 )

**Dick Blick Art Materials** <[dickblick.com](http://dickblick.com)>

(Open Mon-Sat 10-7, Sun 10-5)

**Gamblin**, <[gamblincolors.com](http://gamblincolors.com)>

(No outlet stores\_sold only at other art stores and online)

**Kirsten Gallery**, <[kirstengallery.com](http://kirstengallery.com)>

(Online only)

**Museum Quality Framing**, <[pnwframing.com](http://pnwframing.com)>

(Open Tue-Sat 10-6)

**Tsuga Fine Art & Framing**, [tsugafineart.com](http://tsugafineart.com)>

(Open Tue-Thu 10-6, Fri 10-5, Sat 10-4, Sun 10-3, Closed Mon)